

THE ANSLEY

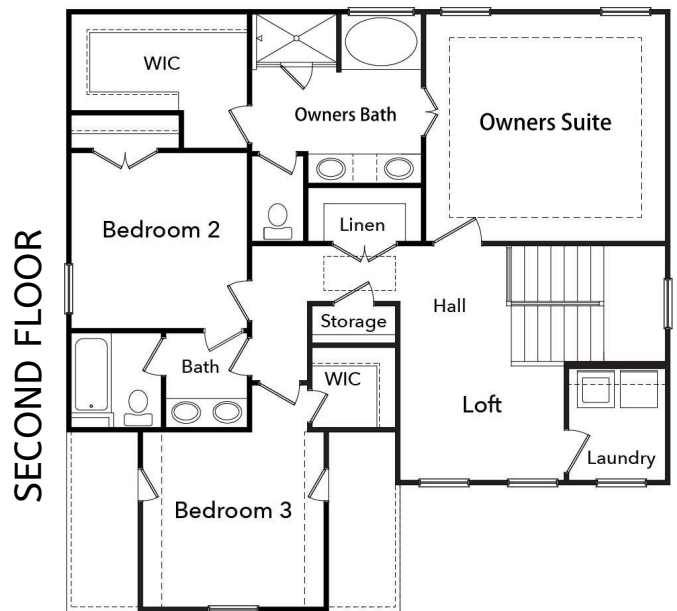
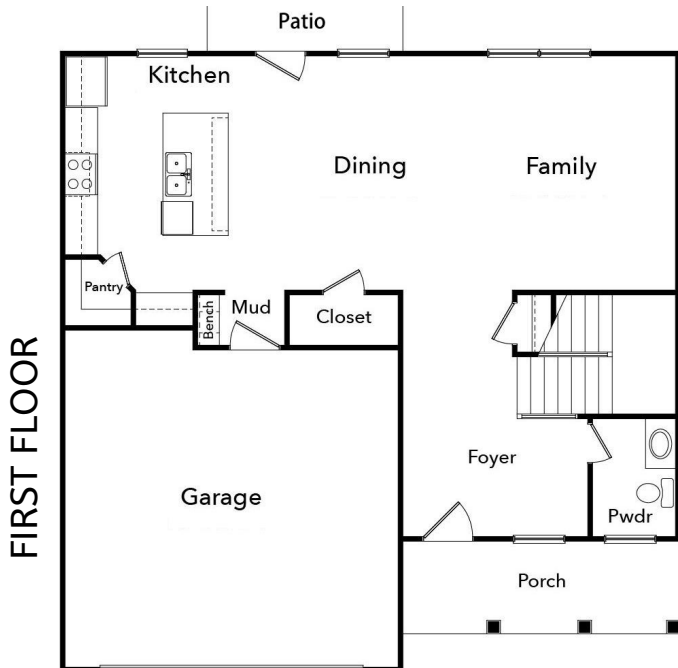


BEDS: 3 | BATHS: 2.5 | 2 Story | 2 Car Garage

2095 SF
base square feet

This home is the perfect place to entertain guests. Upon entering the home, you are greeted with an open concept living space. The gourmet kitchen opens into the dining and family rooms making entertaining a breeze. As you head upstairs you are welcomed by a loft area that can be used as a home office. The owner's suite will be sure to please with an oversized bathroom featuring a double vanity, and a spacious walk-in closet. The additional two bedrooms upstairs share bath with a separate vanity and tub area.

www.CREATEYOURHOME.com



CREATE HOMES LLC MARKETING COLLATERAL REVISED 09/28/19

This floor plan is for marketing purposes and is to be used as a general guide only. Home and community information, including pricing, specifications, incentives, product brand, terms and conditions, availability and amenities, are subject to change at any time without notice or obligation. Drawings, pictures, photographs, video, square footages, floor plans, elevations, features, colors and sizes are approximate for illustration purposes and will vary from the homes as built. Plans are copyrighted and/or otherwise subject to Create Homes and cannot be reproduced or copied without its prior written consent.

