

# THE BERKLEY

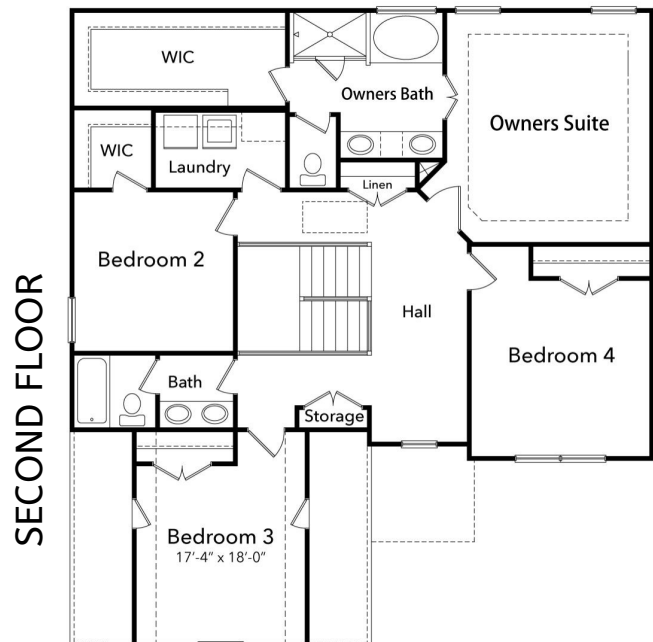
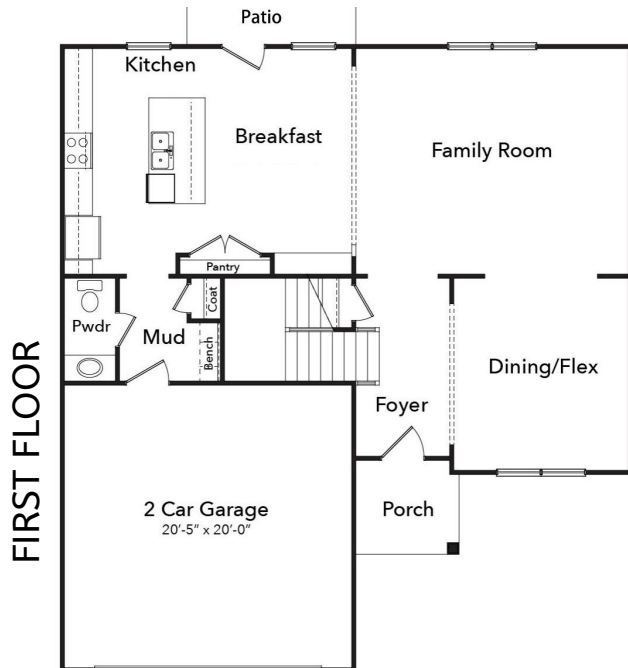


**BEDS: 4 | BATHS: 2.5 | 2 Story | 2 Car Garage**

**2535 SF**  
base square feet

The Berkley has plenty of space for the large family. On the main level you are immediately welcomed by the open concept space that opens from the dining into the family and kitchen. The kitchen features an oversized island, breakfast space and access to outdoor living in the rear. The luxurious Owner's Suite features a spacious bathroom with a large walk-in closet. The three additional bedrooms up provide plenty of space for the family to spread-out.

[www.CREATEYOURHOME.com](http://www.CREATEYOURHOME.com)



CREATE HOMES LLC MARKETING COLLATERAL REVISED 09/28/19

This floor plan is for marketing purposes and is to be used as a general guide only. Home and community information, including pricing, specifications, incentives, product brand, terms and conditions, availability and amenities, are subject to change at any time without notice or obligation. Drawings, pictures, photographs, video, square footages, floor plans, elevations, features, colors and sizes are approximate for illustration purposes and will vary from the homes as built. Plans are copyrighted and/or otherwise subject to Create Homes and cannot be reproduced or copied without its prior written consent.

