

# THE HAMPTON

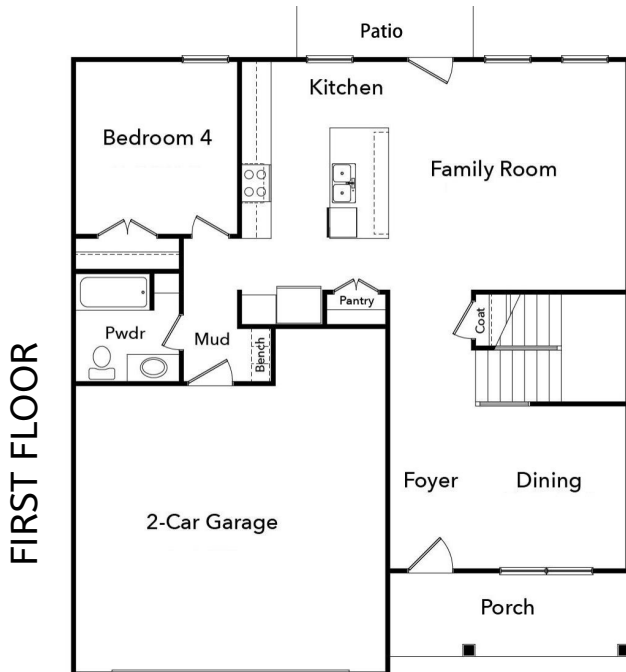


**BEDS: 4/5 | BATHS: 2.5 | 2 Story | 2 Car Garage**

**2375 SF**  
base square feet

The Hampton welcomes you from the front porch into the foyer and dining room. The gourmet kitchen provides a great entertainment space with an oversized island opening into the family room. The 4th bedroom down provides a great guest space or teen suite. The Owners Suite upstairs features a double vanity and oversized walk-in closet. The two additional bedrooms and upstairs flex space provide plenty of space for the entire family to enjoy.

[www.CREATEYOURHOME.com](http://www.CREATEYOURHOME.com)



CREATE HOMES LLC MARKETING COLLATERAL REVISED 09/28/19

This floor plan is for marketing purposes and is to be used as a general guide only. Home and community information, including pricing, specifications, incentives, product brand, terms and conditions, availability and amenities, are subject to change at any time without notice or obligation. Drawings, pictures, photographs, video, square footages, floor plans, elevations, features, colors and sizes are approximate for illustration purposes and will vary from the homes as built. Plans are copyrighted and/or otherwise subject to Create Homes and cannot be reproduced or copied without its prior written consent.

