

Dogwood B - Magnolia Grove



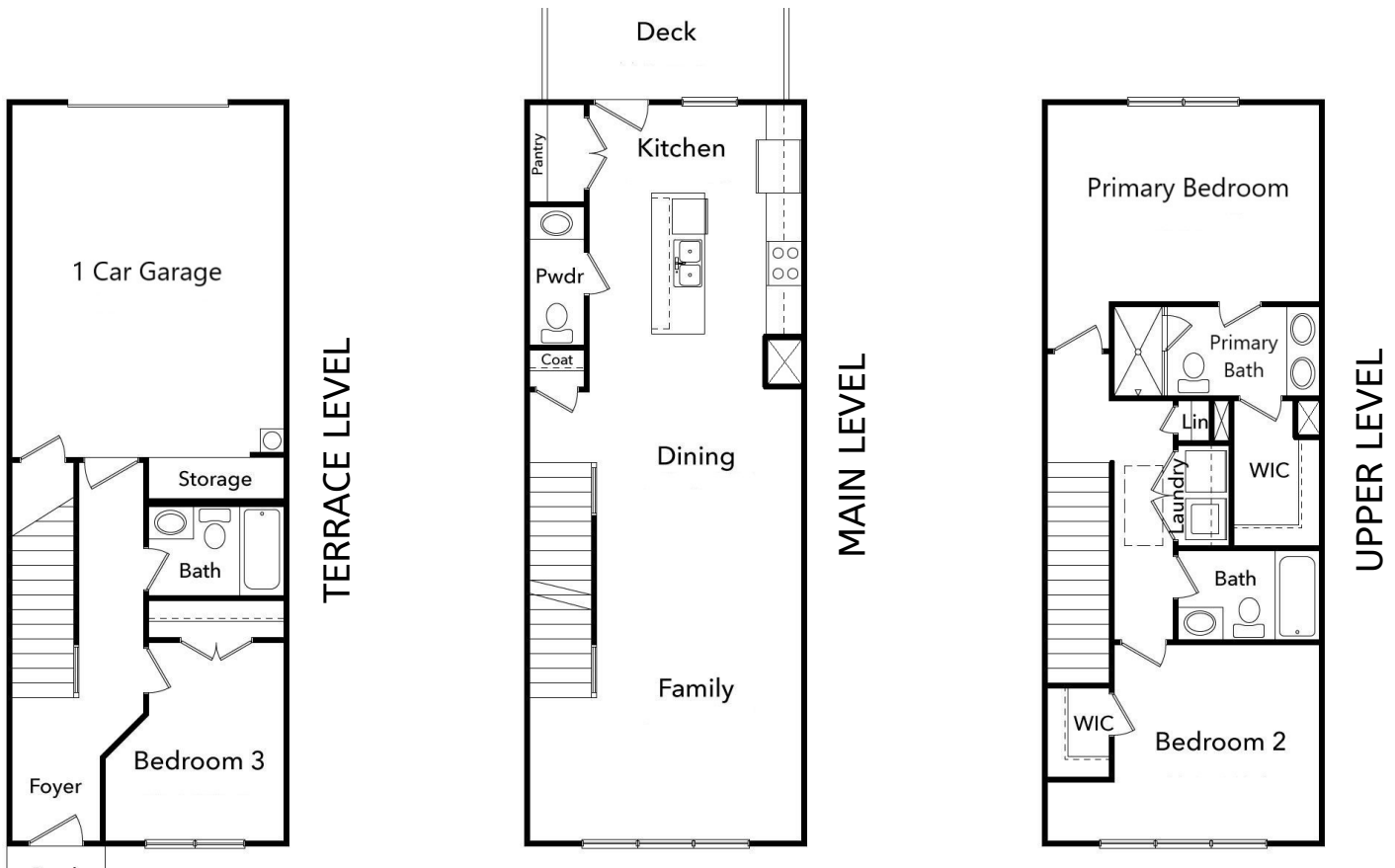
BEDS: 3 | BATHS: 3.5 | 3 Story | 1 Car Garage

1685 SF

base square feet

This floor plan provides a wonderful place to entertain guests. The terrace level entry to the home has a finished flex bedroom with a full bathroom. On the main level, the gourmet kitchen opens into the dining and family rooms making entertaining a breeze. The upper level provides two bedrooms and two full baths. The owner's suite will be sure to please with an oversized bathroom featuring a double vanity and a spacious walk-in closet.

WWW.CREATEYOURHOME.COM



CREATE HOMES, LLC MARKETING COLLATERAL, REVISED 09/28/19
 This floor plan is for marketing purposes and is to be used as a general guide only. Home and community information, including pricing, specifications, incentives, product brand, terms and conditions, availability and amenities, are subject to change at any time without notice or obligation. Drawings, pictures, photographs, video, square footages, floor plans, elevations, features, colors and sizes are approximate for illustration purposes and will vary from the homes as built. Plans are copyrighted and/or otherwise subject to Create Homes and cannot be reproduced or copied without its prior written consent.

